

KPX10A

OUTPUT PEAK POWER:

100 Watts

SPEAKER:

10" w/ horn

INPUT:

Balanced XLR

1/4" Line Level

OUTPUT:

1/4" Line Level

FREQUENCY RESPONSE:

78 Hz ~ 20 kHz

CABINET:

30/90 degree positioning

1-3/8" pole mount

MAX SPL:

115 dB SPL

CROSSOVER FREQUENCY:

5kHz

DIMENSIONS (mm):

469mm H x 299mm W x 310mm D

WEIGHT (KPX10A):

10.2 kg ~ 22.5 lbs

KPX12A

OUTPUT PEAK POWER:

200 Watts

SPEAKER:

12" w/ horn

INPUT:

Balanced XLR

1/4" Line Level

OUTPUT:

1/4" Line Level

FREQUENCY RESPONSE:

56 Hz ~ 20 kHz

CABINET:

30/90 degree positioning

1-3/8" pole mount

MAX SPL:

119 dB SPL

CROSSOVER FREQUENCY:

5kHz

DIMENSIONS (mm):

544mm H x 380mm W x 399mm D

WEIGHT (KPX12A):

15.5 kg ~ 34.2 lbs

KPX15A

OUTPUT PEAK POWER:

200 Watts

SPEAKER:

15" w/ Neo compression driver

INPUT:

Balanced XLR

1/4" Line Level

OUTPUT:

1/4" Line Level

FREQUENCY RESPONSE:

56 Hz ~ 20 kHz

CABINET:

30/90 degree positioning

1-3/8" pole mount

MAX SPL:

120 dB SPL

CROSSOVER FREQUENCY:

2.4kHz

DIMENSIONS (mm):

609mm H x 450mm W x 451mm D

WEIGHT (KPX15A):

20.5 kg ~ 45.2 lbs



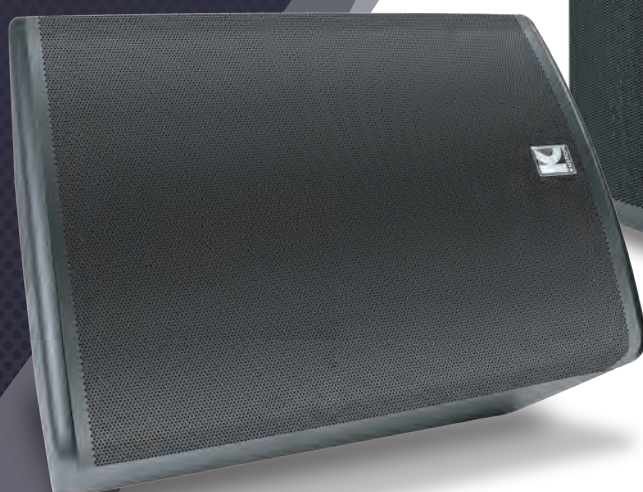
www.kustom.com
Kustom Amplification, Inc.
3015 Kustom Drive
Hebron, Kentucky
USA 41048

Kustom®

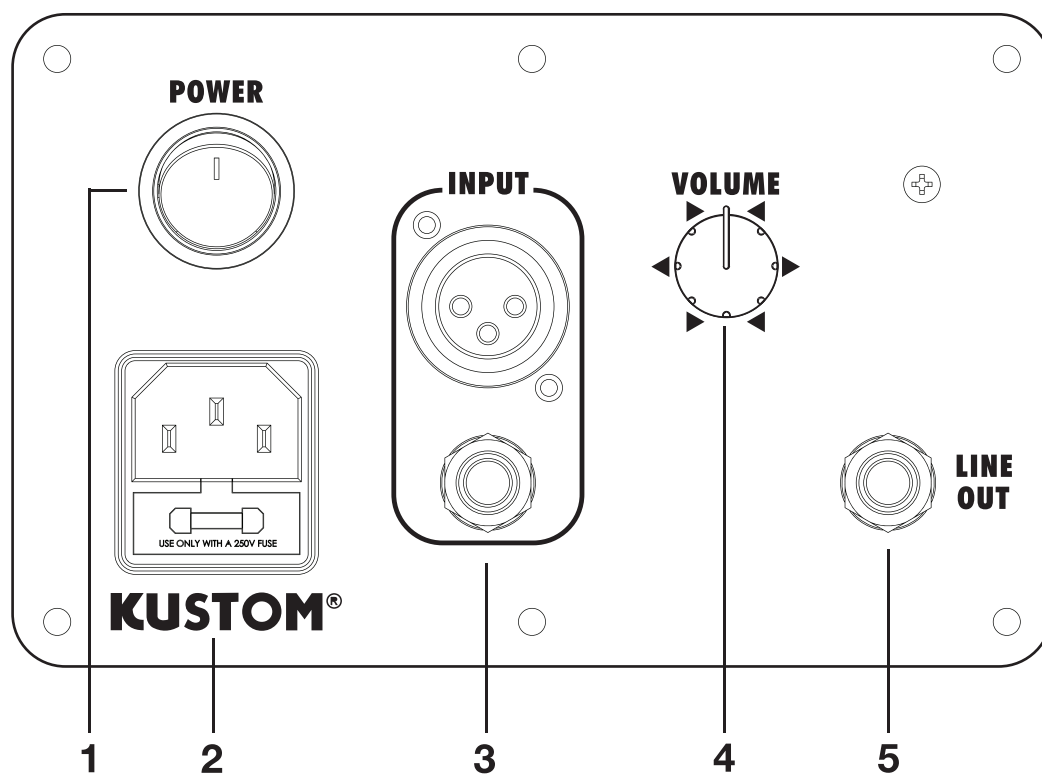
KUSTOM®
KPX

Powered Series

Models: KPX10A, KPX12A, KPX15A



KPX Control Panel



1. POWER: This switch activates AC power to the powered speaker. When the switch is illuminated, the unit is ON.

2. AC POWER INPUT: Connect the power cable here (Included in box). The power cord can be removed for storage and replacement if damaged. Insert the AC cord (provided) firmly into the AC receptacle.

Replace the AC power cord if protective jacket is damaged or ground pin is damaged or removed.

3. INPUTS: Balanced XLR and TRS 1/4-inch jacks are provided. These may be used to connect line level devices such as nonpowered mixers, preamps, keyboards, drum machines and other audio devices.

Use either the XLR or 1/4-inch input jack, but not both jacks at the same time.

INPUT does not have enough gain to connect a microphone directly.

4. VOLUME: This knob controls the overall volume level of the KPX powered speaker. (This does not control the volume of the Line Out jack)

5. LINE OUT: This is a Balanced or Unbalanced TRS 1/4-inch Line Out that may be used to “daisy chain” two or more KPX speakers. For example, if a nonpowered audio mixer has been connected to the KPX speaker’s Input, you may then connect the Line Out of this first speaker to a second speaker’s Input. This is called a “daisy chain” and it often requires shorter cable hook-up lengths versus connecting the second speaker directly from the mixer.

LINE OUT will not power a passive (non-powered) speaker.

Congratulations on the purchase of your new KPX speaker. These models draw on decades of design and manufacturing experience at Kustom. KPX Speakers were built from the ground up to offer world-class tone, useful features and reliable performance.

Inside this manual you’ll find valuable information about the speaker’s controls and specifications. We wish you many years of enjoyment with your Kustom speaker.